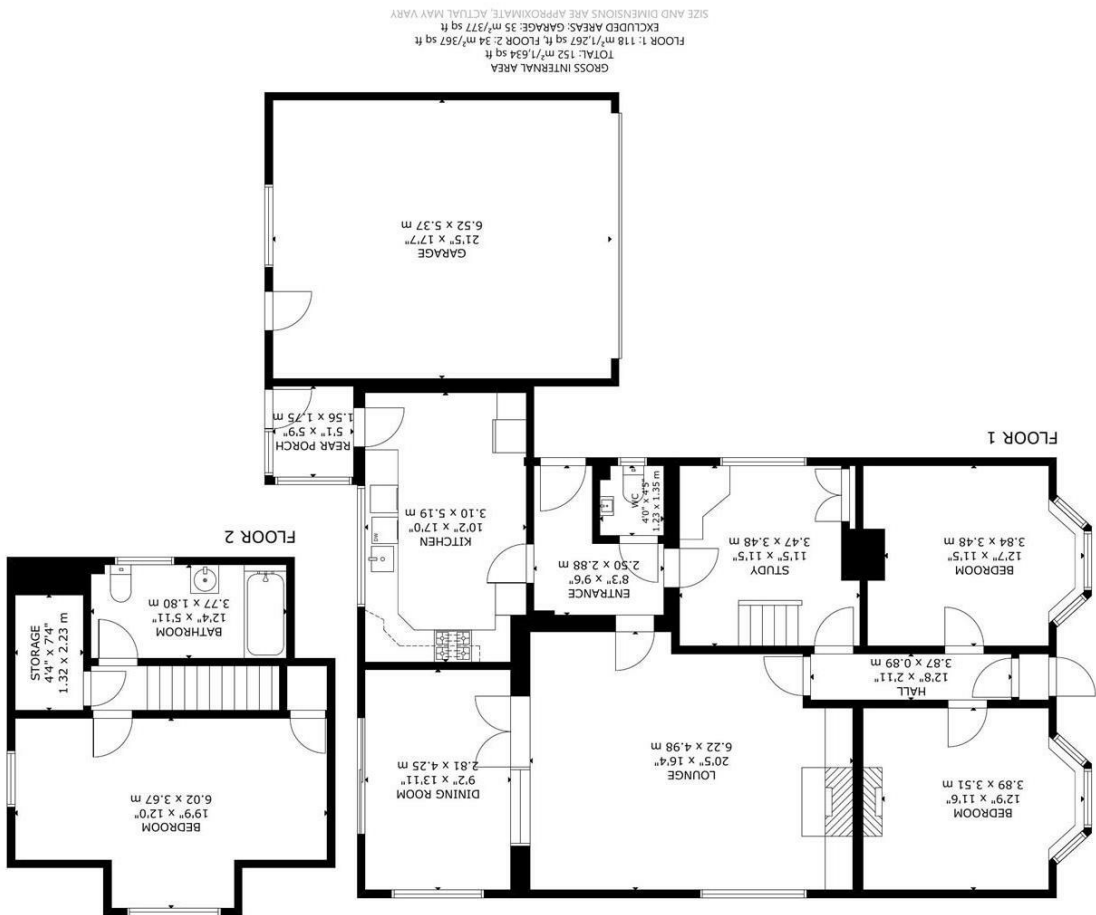
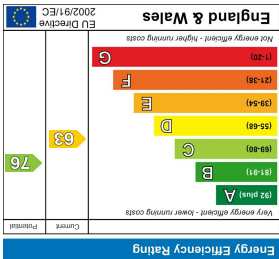
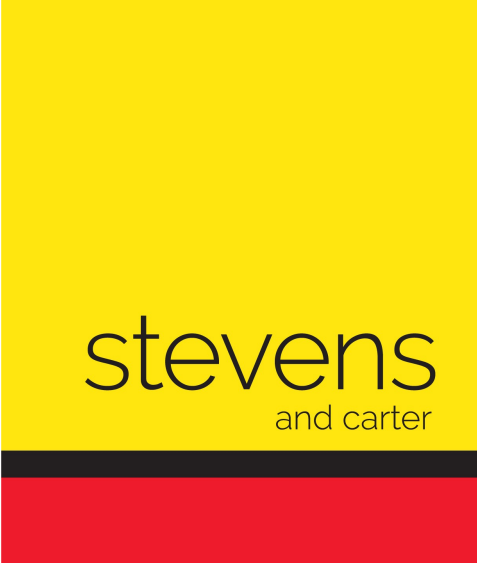
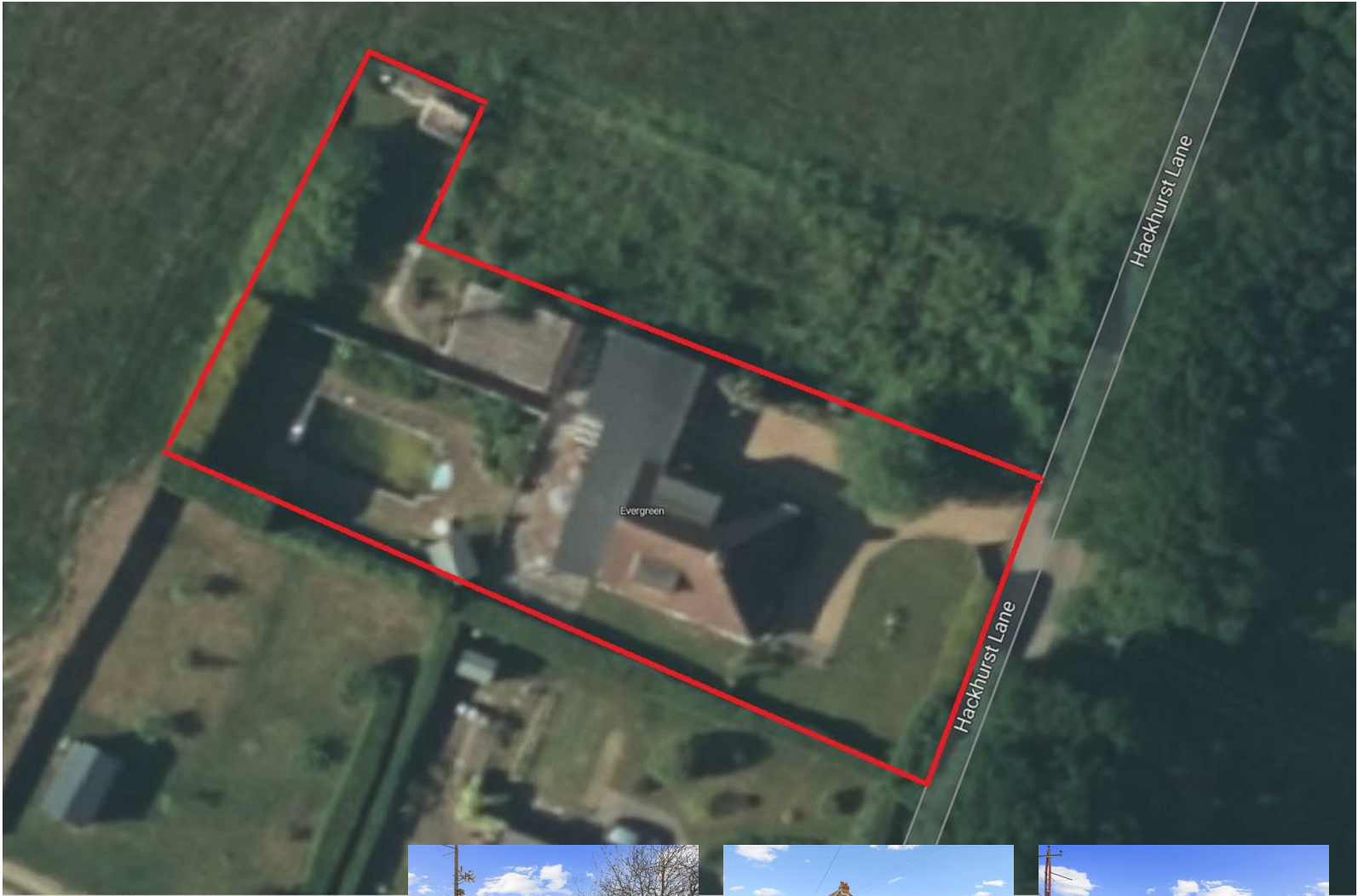


47 High Street | Hailsham | East Sussex | BN27 1AN
Tel: 01323 840444
www.stevensandcarter.co.uk

You may download, store and use the material for your own personal use and research. You may not republish, retransmit, redistribute or otherwise make the material available to any party or make the same available on any website, online service or bulletin board of your own or any other party or make the same available in hard copy or in any other media without the website owner's express prior written consent. The website owner's copyright must remain on all reproductions of material taken from this website.



Hackhurst Lane, Hailsham



- 3D Virtual Tour
- Opposite Farmland
- Situated Along A Lane
- Nearby A22
- Scope To Improve
- Driveway
- Double Garage
- Workshop
- Versatile Layout
- Gas Central Heating

Freehold

£495,000



3 BEDROOM



2 RECEPTION



2 BATHROOM



2 GARAGE

Hackhurst Lane, Hailsham

Hackhurst Lane, Hailsham

DESCRIPTION

3D Virtual Tour | Non Estate Location | Accessed Via Lane | Generous Plot | Huge Potential | Driveway & Double Garage | Workshop | Extended | Three Reception Room | Double Sized Bedrooms | Study Area | Gas Central Heating with brand new Alpha Boiler |

Looking for a chalet bungalow bursting with potential? This delightful three-bedroom detached home, cherished by its owner for many years, is ready to welcome its next chapter. Set at the end of a sweeping gravel driveway, the property offers a wealth of opportunities to adapt or extend (subject to the necessary consents). With spacious receptions and versatile bedrooms arranged over two floors, there's already plenty to love.

The generous plot, approximately one-third of an acre, features a double garage and a swimming pool (currently repurposed as a duck pond), all framed by idyllic views over neighbouring farmland. Imagine waking to the peaceful sounds of sheep while you tend to your garden oasis. Conveniently located with the A22 just a stone's throw away, this charming home is ready to be transformed into your perfect retreat.



Hackhurst Lane, Hailsham

- Side Entrance Hall 2.50 x 2.88 (8'2" x 9'5")
- Kitchen-Breakfast Room 3.10 x 5.19 (10'2" x 17'0")
- Lounge 6.22 x 4.98 (20'4" x 16'4")
- Dining/Garden Room 2.81 x 4.25 (9'2" x 13'11")
- Study/Reception Room 3.47 x 3.48 (11'4" x 11'5")
- Bedroom One 3.89 x 3.51 (12'9" x 11'6")
- Bedroom Two 3.84 x 3.48 (12'7" x 11'5")
- Front Entrance - Inner Hallway 3.87 x 0.89 (12'8" x 2'11")
- WC 1.23 x 1.35 (4'0" x 4'5")
- Rear Porch 1.56 x 1.75 (5'1" x 5'8")
- Stairs To First Floor
- Loft Bedroom 6.02 x 3.67 (19'9" x 12'0")
- Bathroom 3.77 x 1.80 (12'4" x 5'10")
- Storage/Airing Cupboard 1.32 x 2.23 (4'3" x 7'3")
- Double Garage 6.52 x 5.37 (21'4" x 17'7")
- Driveway Parking
- Workshop
- Garden with Pool